



WHAKAMĀRAMA NUI: TŪTURU ME PĀNUI!

- Taihoa ake i tēnei tau ka tukuna e Entrust tētehi moni hua.
- Ka tukuna aua moni nei ki ngā kiritaki o Vector i te Rohe Tarahiti o Tāmaki-makau-rau, o Manukau, o te raki o Papakura rānei, kia ea rā anō te rārangi ingoa moni hua.
- Ka tukuna ngā moni ki te tangata, te rōpū rānei nōna te ingoa kei runga o te nama hiko.
- Mehemea kāore te ingoa kei runga o te nama hiko i te rite ki tērā o tō pūtea pēke, ā, ko tō hiahia me tuku tō moni hua hei tieke, me tuku tōtika tonu rānei ki tō pēke, whakatikahia mai koa o whakamārama ki tō kaihoko hiko – ēngari mō Entrust kāore e taea e ia.
- Ki te tere hiahia koe ki tō moni, whakakia mai koa te pepatono utu tōtika nei ka whakahoki mai ai.



FAKAHINOHIHO MAHU'INGA: 'OKU FIEMAU KE KE LAU 'ENI

- 'E totongi atu 'e he Entrust 'a e tivitene pe 'inasi mei he tupu 'i he kongā kimui 'o e ta'u ni'.
- 'E totongi atu 'a e pa'anga ko eni ki he kakai fakatau 'uhila mei he Vector Electricity 'i he ngaahi vāhenga Entrust ko'eni, hili 'a hono fakama'opo'opo 'a e hinga 'o kinautolu ke nau ma'u e pa'anga: Auckland, Manukau, Northern Papakura, Eastern Franklin.
- 'E totongi atu 'a e pa'angā ni ki he tokotaha pe ko e kautaha ko ia 'oku tu'u hono hingoā 'i he tohi mo'ua 'uhilā.
- Kapau 'oku ke fiema'u ke totongi atu 'a e pa'anga ni 'aki ha sieke pe ko e fakahū hangatonu pē ki ho'o 'akauni he pangikē, kuo pau ke tatau 'a e hinga 'oku ha 'i he tohi mo'ua 'uhilā pea mo e hinga 'o e 'akauni 'i he pangikē. Kapau 'oku 'ikai ke na tatau pea ke 'alu 'o fakatonutonu eni mo e kautaha 'oku ke fakatau 'uhila mei ai - he 'oku 'ikai lava ke fai e fakatonutonu ni 'e he Entrust.
- Kapau 'oku ke fiema'u ke toe vave ange 'a ho'o ma'u e pa'anga ni, kātaki 'o fakafonu pea fakafoki mai 'a e foomu direct credit 'oku 'oatu fakataha mo e tohi ni. Ko e foomu eni 'oku kole'aki ke totongi hangatonu pe 'a e pa'anga ki he 'akauni 'i he pangikē. pea fakafoki mai 'a e lau'i direct credit form 'oku 'oatu fakataha mo e (direct credit form) 'a ia 'oku 'oatu fakataha mo tohi ni. Ko e foomu eni 'oku ke kole'aki ke fakahū hangatonu 'a e pa'anga ki ho'o 'akauni 'i he pangikē.



重要信息：请务必阅读！

- Entrust (奥克兰能源消费者信托基金) 将于今年晚些时候支付红利。
- 该笔红利将在我们完成分红名单之后，分别支付给位于奥克兰市、曼努考市、帕帕库拉 (Papakura) 北部和富兰克林 (Franklin) 东部本信托基金下属地区内的 Vector 电力公司客户。
- 我们将按电费单上所列个人姓名或组织名称，向其发放红利。
- 如果电费单上所列名称与您的银行账户名不同，而您希望以支票或直接转账的形式获得该笔红利，请与您的电力零售商联系，更新您的相关信息 (Entrust 无法为您提供此项服务)。
- 如果您希望尽早获得这笔款项，请填写随信所附的直接转账表格并将其寄还给我们。



IMPORTANT INFORMATION: YOU NEED TO READ THIS!

- Entrust will be paying a dividend later this year.
- The money will be paid to people who are customers of Vector electricity within the Entrust district of Auckland, Manukau, northern Papakura, and eastern Franklin when we finalise the dividend list.
- The money will be paid to the person or organisation whose name is on the power bill.
- If the name on your power bill is not the same as your bank account and you want to get your dividend as a cheque or direct credit, please update your details with your electricity retailer – Entrust can't do this for you.
- If you want to get your money faster, please fill out and return the direct credit form from this pack.



FAAMATALAGA TAUA: E MANAOMIA OE IA E FAITAUINA LE FAAALIGA LENEI.

- O le a totongi atu e le Entrust se vaeveaga o le tupe o le polofiti (dividend) i se taimi o mulimuli mai o le tausaga nei.
- O nei tupe o le a totongi atu i tagata o loo faaaogaina le eletise mai le fale eletise o le Vector i le itumalo o Aukilani, Manukau poo Papakura i matu, pe a uma ona matou faia le lisi o le vaeveaga o le tupe.
- O nei tupe o le a totongi atu i le tagata poo se faalapotopotoga o loo i ai le igoa i le pili o le paoa (power bill).
- Afai o le igoa o loo i le pili o le paoa e le tutusa ma le igoa o loo i lau tusitupe i le faletupe, ma ete manao e avatu lau tupe o le vaeveaga ise siaki poo le tu'u sa'o (direct credit) i lau tusitupe, faamolemole toe faasa'o faamatalaga auilili tau oe ma lou fale eletise – e le mafai e le Entrust ona faia lea tulaga mo oe.
- Afai ete manao ia vave maua mai lau tupe, faamolemole faatumu ma toe faafo'i mai le pepa e tu'u sa'o ai le tupe e pei ona ta'ua i nei faamatalaga.



중요 안내 사항: 아래 내용을 꼭 읽어 보십시오!

- Entrust 는 금년 하반기에 배당금을 지급할 예정입니다.
- 배당금을 받을 수 있는 분은 수령자 명단 작성일 현재 오克兰드, 마누카우, 파파쿠라 북부 및 프랭클린 동부의 AECT 관할 구역에 거주하는 Vector 전력회사 고객입니다.
- 배당금은 전기 요금 고지서에 기재된 개인 또는 기관 앞으로 지급됩니다.
- 수표나 계좌이체 방법으로 배당금을 수령하고자 하는데 요금 고지서에 기재된 이름과 은행 계좌 명목이 다른 경우 거래하는 전력 소매 회사에 의뢰해 인적 사항을 변경하시기 바랍니다. Entrust 는 이러한 변경을 할 수 없습니다.
- 배당금을 보다 신속히 수령하기 원하시면 이 안내서에 포함된 계좌이체 양식을 작성하여 발송해 주시기 바랍니다.

INTRODUCING OUR NEW NAME



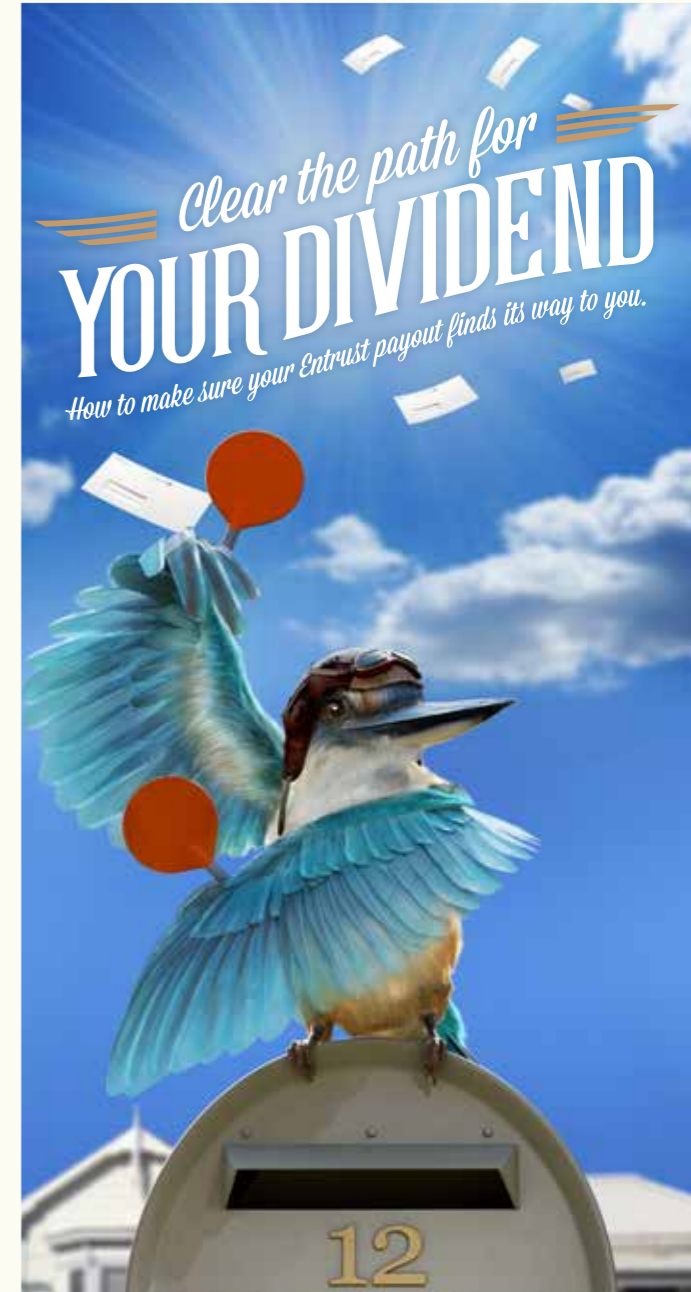
Entrust is a private trust that owns the majority of Vector on behalf of our 320,000 beneficiaries.

You may know us as the AECT, or simply as the organisation which sends you a cheque in the mail every year. Maybe you thought we were part of Auckland Council or Government. The fact is, we're a private-sector trust whose purpose is to look after your investment in Vector and to pay you your share of our dividend each year.

So to help clarify who we are and what we do, we changed our name. It's not a major change, just a simple combination of energy and trust - Entrust.

We're not changing though. We're still 100 per cent committed to ensuring the profits from Vector remain in the hands of its beneficiaries - you. We'll continue to pay you your share of its dividends every year until 2073, as we have since 1993.

You can learn more about the history of Entrust, and how to make sure your Entrust dividend finds its way to you later in the year, by reading over the rest of this booklet or by visiting www.entrustnz.co.nz



We've changed our name. See the back for our story.



IT'S TIME TO GET READY FOR YOUR DIVIDEND.

Each September our feathered friend Kenny the Kingfisher delivers a dividend to all of Entrust's beneficiaries. But before Kenny takes off, we need to know your details are correct – we wouldn't want Kenny to feather someone else's nest! So have a read through this newsletter. It'll help you understand the Entrust dividend and make sure yours finds its way to you.

What you need to do:



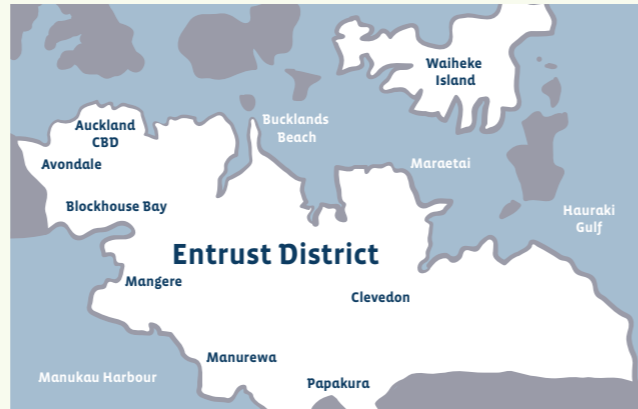
1. Read the form we sent you in the mail.
2. Make sure your details are correct.
3. If your details are all correct, do nothing.
4. If you want to change how you get the dividend, fill out your form and return it by 8th August.

CLEAR THE PATH

- Make sure your name on your electricity bill is the same as your bank account and is spelled correctly.
- If it's not, call your electricity retailer to fix it.

WHAT IS ENTRUST?

Entrust (previously the Auckland Energy Consumer Trust) is a private trust set up in 1993 on behalf of Aucklanders that owns the majority shareholding in Vector. Vector is New Zealand's largest distributor of energy, and is leading the way to create a new energy future. Entrust ensures that Vector remains a stable, profitable and well-run organisation. Our success as a trust also ensures that more than 320,000 people within the Entrust district receive a dividend each year.



WHO IS ENTRUST?

Entrust has five Trustees who are elected every three years.



Entrust Trustees: Paul Hutchison, William Cairns (Chair), James Carmichael, Karen Sherry, Michael Buczkowski (Deputy Chair)

EVELLOR EMPORERCHITE

Volor moditate consequis sit, accum issunt eatur sus ipsam ut fuga. Facit intio. Officab ilissim simin pre sum volore cum et, accab iliciis atis qui resciatibus.

Mil evellor emporerchite es et lam eum faciatur simolore si cus eatistia atquis exceati bustet exearum lit renimi, veritatum fuga. Doluptibus non con none dolor as et as ipsus arum ad ut dolum ipsam eum volor serum aut doluptam ra quiaerit et omias atem aut et re nonsedist, volorer iasperro iligenihil ma coribus.

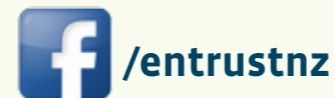
Pudant. Nullandaerum dolupis est, odit molorror aut rerrupti scienda eriamus, se conese exesequatem verovid magnatur, omnis sunt pro iusae doloreperae optatum solore solest am, incto delectiat.

Andis ad mod et ipsunt omni nimet vollique niam doluptatibus is et laut eum enemporro blabo. Lo doluptur reptur?

Dellessi doluptati alit, as debis verspit voluptat uisitatecti totatemquo omni illa dis in consend erferspitaearume comnia si rerum reic te por sunt quis illibus a voluptatur reperibea dipienima.

KENNY'S ON FACEBOOK

Like our page to stay updated and informed.



YOUR DIVIDEND

WHO IS ELIGIBLE FOR THE ENTRUST DIVIDEND?

Everyone who is an Entrust income beneficiary when the dividend roll is struck. Entrust income beneficiaries are everyone on the Vector electricity network in the Entrust district of Auckland, Manukau, northern Papakura and eastern Franklin. The dividend is paid regardless of who your electricity retailer is, as long as your name is on the power bill.

WHEN WILL THE NEXT DIVIDEND BE PAID AND HOW MUCH WILL IT BE?

The amount depends on Vector's financial results and the number of beneficiaries to be paid, which won't be known until later in the year. Last year's amount was \$345.

WHAT HAPPENS IF I MOVE BEFORE THE DIVIDEND IS PAID?

As long as you're a Vector electricity customer and live within the Entrust district when the dividend roll is struck, you will still receive the dividend. Your details will be included in the roll we receive from your electricity retailer later in the year. But if you move out of the Entrust district, you won't be eligible for the dividend.

For more information, visit us online

www.entrustnz.co.nz
0508 ENTRUST (0508 368 7878)